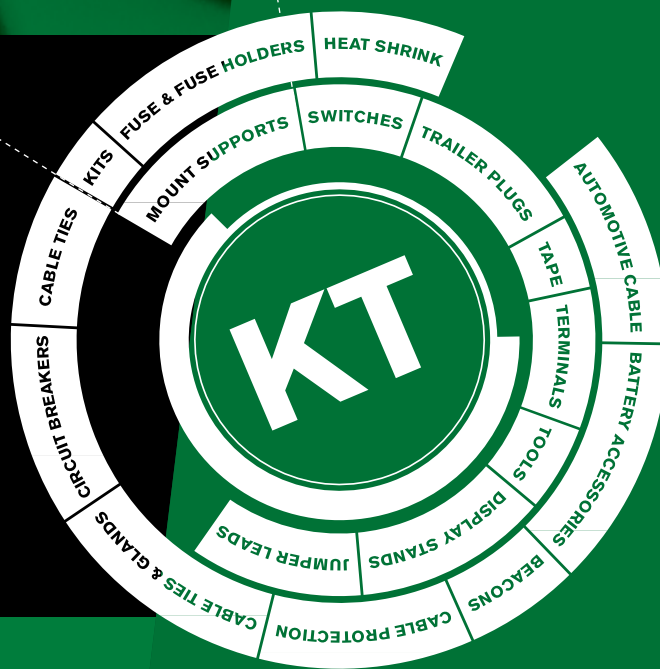


# MOUNT SUPPORTS

- Cable Tie Anchor Bases.....80
- Adhesive Mounting Bases.....80
- Movable Bushing.....80
- Nylon Cable Clamps.....81
- Snap Bushing.....81
- Metal Rubber Cable Clamps.....82
- Wall Plug Mount.....82
- Rubber Grommets.....82

## MOUNT SUPPORTS & BASES



# MOUNTING SUPPORTS & BASES

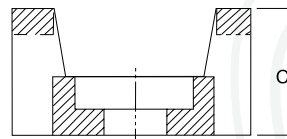
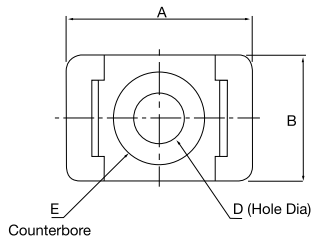
Mounting bases are used to mount cable ties to flat surfaces and walls. Cable clamps are used for fastening items such as hosing, wires and tubing to a surface. Movable bushing is used to wrap around sharp edges so wire and looms can pass through easily. Grommets are used to protect cables from being cut by sharp objects or metal.

## CABLE TIE ANCHOR BASES

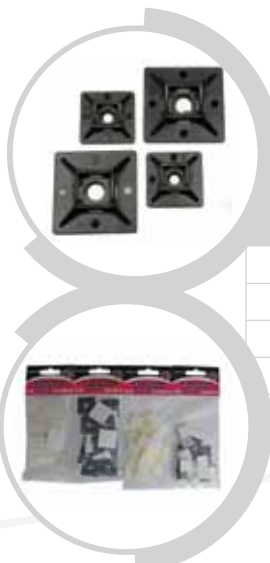
PART NO. BLACK (UV)	PART NO. NATURAL	A MM	B MM	C MM	D MM	E MM	PKT QTY
KTCTM6B	KTCTM6	14.9	9.5	7.2	3.7	7.0	100
KTCTM8B	KTCTM8	14.9	9.5	7.2	4.5	7.8	100
KTCTM8LB	KTCTM8L	21.9	15.9	9.7	4.5	7.8	100
KTCTM10B	KTCTM10	21.9	15.9	9.7	5.0	9.6	100
KTCTM1/4B	KTCTM1/4	21.9	15.9	9.7	6.4	12.6	100



KTCTM6, KTCTM6B, KTCTM8 & KTCTM8B suit 4.8mm cable ties  
All other sizes will take up to 8.0mm



## ADHESIVE BACK MOUNTING BASES

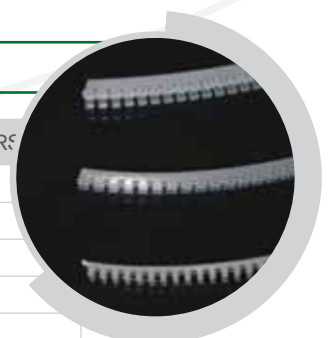


PART NO. BLACK (UV)	PART NO. NATURAL	LENGTH MM	WIDTH MM	PKT QTY
KTMB1919	KTMB1919NT	19	19	100
KTMB2828	KTMB2828NT	28	28	100
KTMB191920	KTMB191920NT	19	19	20
KTMB282820	KTMB282820NT	28	28	20

NOTE: KTMB1919 is used with cable ties of up to 3.5mm width  
KTMB2828 is used with cable ties of up to 4.8mm width

## MOVABLE BUSHING

PART NO.	DUCK DIA. MM	THICKNESS MM	QTY METERS
KTMVB10	1.0	1.0	10
KTMVB16	1.6	1.0 - 1.6	10
KTMVB20	2.0	1.6 - 2.0	10
KTMVB24	2.4	2.0 - 2.4	10
KTMVB32	3.2	2.4 - 3.2	10
KTMVB45	4.5	3.2 - 4.5	10

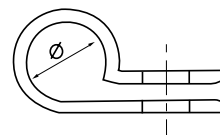
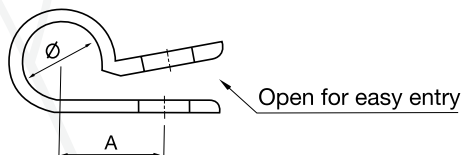
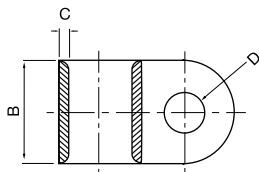


KT Cable Accessories movable bushing can be used to form up sharp edges when cutting through metal objects allowing cable and hoses to run free from damage.

## NYLON CABLE CLAMPS



PART NO. BLACK (UV)	PART NO. NATURAL	BUNDLE INCH	BUNDLE MM	A MM	B MM	C MM	PKT QTY
KT32B	KT32NT	1/8	3.1	8.2	9.5	1.27	100
KT48B	KT48NT	3/16	4.7	9.6	9.5	1.27	100
KT63B	KT63NT	1/4	6.3	10.3	9.5	1.27	100
KT79B	KT79NT	5/16	7.9	10.6	9.5	1.27	100
KT95B	KT95NT	3/8	9.5	11.9	9.5	1.27	100
KT127B	KT127NT	1/2	12.7	15.0	12.7	1.5	100
KT142B	KT142NT	9/16	14.2	15.8	12.7	1.5	100
KT190B	KT190NT	3/4	19.0	19.8	12.7	1.5	100
KT222B	KT222NT	7/8	22.2	21.4	12.7	1.5	100
KT285B	KT285NT	1-1/8	28.5	24.6	12.7	1.5	100

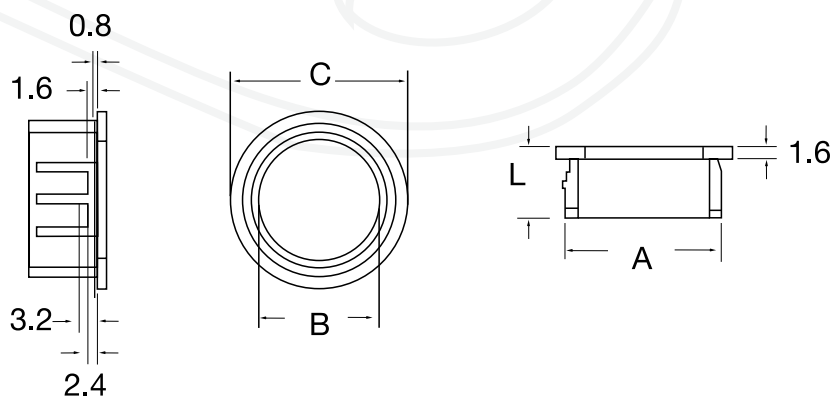


## SNAP BUSHING



OPEN PART NO.	CLOSED PART NO.	MOUNTING HOLE A. MM	B MM	C MM	L MM	PKT QTY
KTSB8	KTSBC8	7.8	5.2	9.4	8	100PCS
KTSB10	KTSBC10	9.5	6.3	12	10.3	100PCS
KTSB13	KTSBC13	12.7	8.2	14.5	10.3	100PCS
KTSB16	KTSBC16	15.9	12.2	18.6	10.3	100PCS
KTSB19	KTSBC19	19	14.3	21.5	10.3	100PCS
KTSB22	KTSBC22	22	17.3	23.8	11.5	100PCS
KTSB26	KTSBC26	25.1	19.1	28	11.5	100PCS
KTSB30	KTSBC30	29.7	24.1	33.3	11.5	100PCS
KTSB38	KTSBC38	38.1	29	41.2	11.4	100PCS
KTSB45	KTSBC45	43.6	35.4	47.8	11.6	100PCS

KT Cable Accessories  
 snap bushing use quality  
 UL approved 6/6 nylon.  
 Flammability rating of 94V-2.  
 Snap bushing is designed  
 to protect from sharp edges  
 where you may be running  
 cable and hoses through metal  
 objects



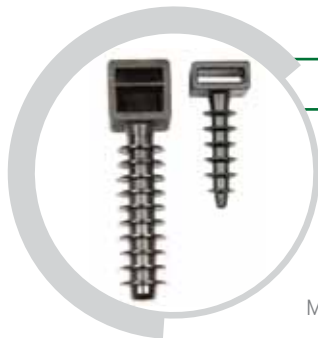


# MOUNTING SUPPORTS & BASES

## METAL RUBBER CABLE CLAMPS



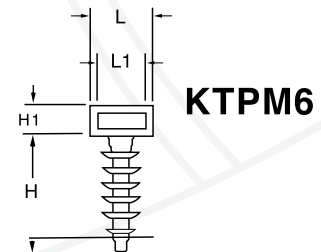
PART NO.	WIDTH MM	BUNDLE MM	PKT QTY
KTPC6	15	6	10
KTPC8	15	8	10
KTPC10	15	10	10
KTPC13	15	13	10
KTPC16	15	16	10
KTPC19	15	19	10
KTPC22	15	22	10
KTPC27	15	27	10
KTPC32	15	32	10
KTPC35	15	35	10
KTPC40	15	40	10



## WALL PLUG MOUNT

PART NO.	H. MM	H1. MM	W. MM	L. MM	L1. MM	PKT QTY
BLACK (UV)						
KTPM6	34.6	5.9	9.5	14	10	100

MATERIAL: UL approved nylon 66, 94V-2



## RUBBER GROMMET open/closed



PART NO. OPEN	PART NO. CLOSED	A MM	B MM	C MM	D MM	E MM	PKT QTY
KTGM0603	KTGMC0603	8.5	6.3	3.4	4.7	1.7	20
KTGM0705	KTGMC0705	10.2	7.2	5.4	4.4	1.7	20
KTGM1006	KTGMC1006	13.3	10.6	6.4	6.3	1.7	20
KTGM1410	KTGMC1410	19.5	13.9	10.5	6.4	3.4	20
KTGM2015	KTGMC2015	23.7	20.1	15.5	6.1	1.7	20
KTGM2518	KTGMC2518	29.9	25.1	18.9	7.2	1.5	10
KTGM3225	KTGMC3225	38.1	31.7	25.0	7.8	1.7	10

